

# Application Note

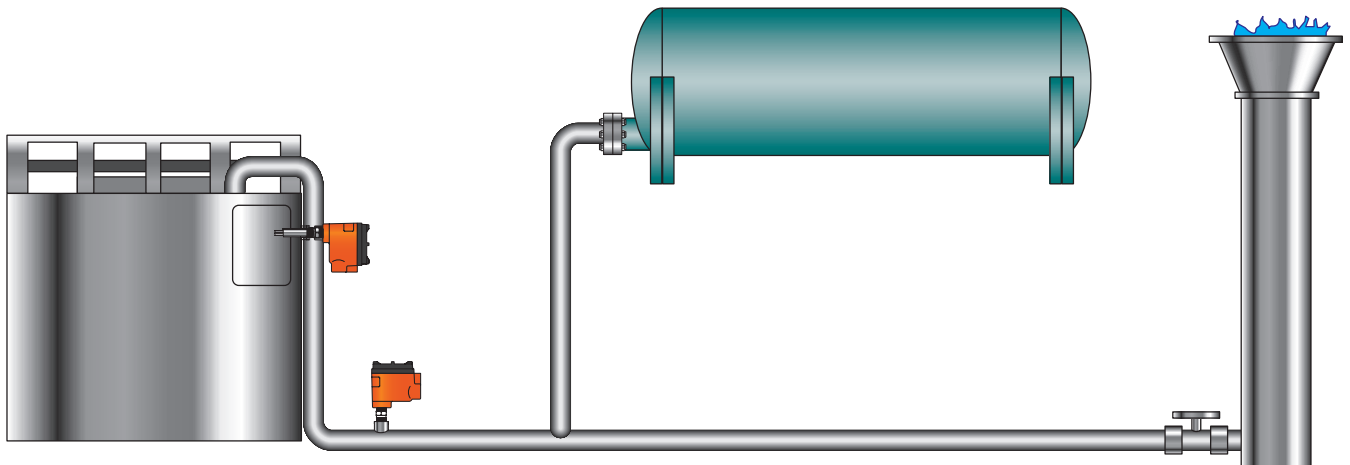
Application Note: 062706

**KAYDEN**  
I N S T R U M E N T S

## Monitoring Digester Gas Flow - Water / Wastewater Treatment

**Application:** Monitor Gas Flow in a Digester

**Product:** Kayden CLASSIC 800 Series Thermal Dispersion Flow, Level, Interface & Temperature Switch & Transmitter



### Description:

Accurate and repeatable monitoring of the gas flow in anaerobic digester systems is critical to proper operations in any wastewater treatment plant.

### Problem:

It is extremely difficult to find one device that is versatile enough to perform in multiple applications and rugged enough to withstand the conditions in a WWT plant. Most WWT plants have several digesters, pumps, flocculant / sludge tanks, and sluice lines, each of which requires flow / level instrumentation that will resist damage caused by high / low temperatures, humidity, corrosion, and contamination.

Most flow / level instruments are either too expensive, too difficult to install, or are damaged when the probes are coated by the material / media. For this reason the E & I personnel in a typical WWT plant are forced to “adapt” and maintain an array of flow and level instrumentation.

### Solution:

Kayden thermal dispersion switches perform reliably in applications where coating / contamination cause other instruments to fail. The Kayden CLASSIC 800 switch may be set to alarm either on flow (increasing flow) or no-flow (decreasing flow) with two independent relay contacts and 4-20mA analog output. The power, range, and set points may be independently and incrementally set for a wide range of response times and to eliminate “nuisance alarms”.

Kayden switches are versatile, easy to set up and require very little maintenance (no calibration is ever required). The electronics modules are interchangeable and 100% field replaceable. Every Kayden electronics module is built to be configured by the user for flow, level, interface and/or temperature with air, gases, liquids or slurries. All units feature automatic, continuous self-diagnostics with auto-alarm function.

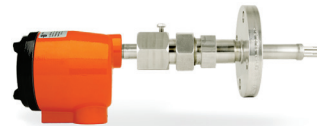
**Applicable CLASSIC™ 800 Models**



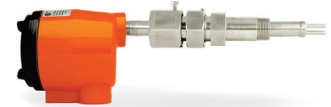
**CLASSIC™ 810**



**CLASSIC™ 812**



**CLASSIC™ 814**



**CLASSIC™ 816**



**CLASSIC™ 828**



**CLASSIC™ 830**



**CLASSIC™ 832**

**Contact Us & Ordering Information**

**Shop Online**

[www.kayden.com](http://www.kayden.com)

**Telephone**

1 (403) 253-1423  
001 403 253-1423

**Fax**

1 (403) 255-0042 North America  
001 403 255-0042 International

**E-Mail**

[info@kayden.com](mailto:info@kayden.com)

**Web**

[kayden.com](http://kayden.com)

**Hours** Monday – Friday 8:00 a.m. – 5:00 p.m. MST

**Mailing Address** 3364–114th Avenue S.E., Calgary, Alberta, Canada T2Z 3V6

**Contact a Local Distributor**

**Distributors**

Visit [kayden.com](http://kayden.com) to find a local Distributor near you. Distributors provide local inventory, technical support and service.



For more information about the CLASSIC Series or any of Kayden's other products, please visit [kayden.com](http://kayden.com)