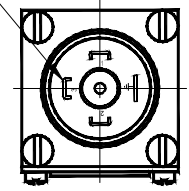
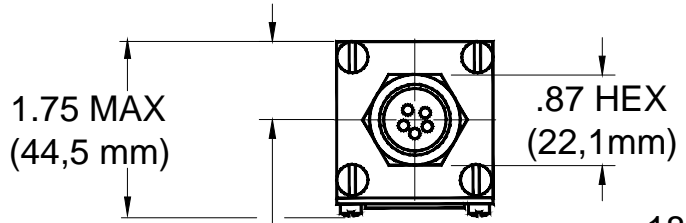


ELECTRICAL CONNECTOR  
FOUR BLADES CONFORMS  
TO DIN 43650



18" (457 mm) 18 AWG  
FREE LEADS

.75  
(19,0 mm)

ELECTRICAL CONNECTION  
1/2-14 NPT

5.68 MAX  
(144,3 mm)

ADJUSTMENT WHEEL

(2) MOUNTING HOLES  
.210 (5,3 mm) DIAMETER

5.15 MAX  
(130,8 mm)

1.34  
(34,0 mm)

1.13  
(27,6 mm)

1.50  
(38,1 mm)

5.8 / 5.5  
(147,3 / 139,7 mm)

.38 (9,7 mm) DIAMETER  
TEMPERATURE PROBE

1.25 HEX  
(31,8 mm)

