

2/2 WAY DIRECT ACTING SOLENOID VALVE, G 1/8"

COMMON FEATURES

Media[Ⓢ]: water, oil, air

Media temperature: -10°C ÷ +130°C

Ambient temperature: -10°C ÷ +50°C

Body material: brass (CW719R EN 12165) low lead content

Orifice material: stainless steel (1.4305 EN 10088/AISI 303)

Operator material: stainless steel

Seal material: foodgrade FKM

Protection class: IP 65 (with connector and gasket)

OPTIONS

PDM seal, temperature max. 120°C (e.g. code RB297DEC)

NPT connection on request, minimum batch may be required (e.g. code RB297DVCN)

NOTES

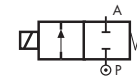
Ⓢ Valve suitable for contact with food media as per the EEC Directives and Regulations. For more specific information, please contact M&M Sales Department.

DIMENSIONS & WEIGHTS		B297	RB297
G connection	[ISO 228]	1/8"	1/8"
A	[mm]	30	30
B	[mm]	65	67.5
C	[mm]	18	18
D	[mm]	7	7
weight	[kg]	0.15	0.15

VALVE	nominal Ø	flow rate Kvs	OPD			COILS	
			min.	max. AC	max. DC	code	[Volts/Hz]
code	[mm]	[l/min]	[barg]	[barg]	[barg]	code	[Volts/Hz]
B297DVA	1.0	0.5	0	30	28	2250	24v DC
B297DVB	1.2	0.7	0	25	22	2200	24v 50/60Hz
B297DVC	1.5	1.0	0	22	18	2400	110v 50Hz - 120v 60Hz
B297DVE	2.0	1.7	0	18	9	2600	200v 50Hz - 220v 60Hz
B297DVG	2.5	2.3	0	13	3	2700	230v 50Hz - 240v 60Hz
B297DVH	3.0	3.0	0	8	1		

VALVE	nominal Ø	flow rate Kvs	OPD			COILS	
			min.	max. AC	max. DC	code	[Volts/Hz]
code	[mm]	[l/min]	[barg]	[barg]	[barg]	code	[Volts/Hz]
RB297DVA	1.0	0.5	0	25	25	2250	24v DC
RB297DVB	1.2	0.7	0	20	20	2200	24v 50/60Hz
RB297DVC	1.5	1.0	0	15	15	2400	110v 50Hz - 120v 60Hz
RB297DVE	2.0	1.7	0	10	10	2600	200v 50Hz - 220v 60Hz
RB297DVG	2.5	2.3	0	5	5	2700	230v 50Hz - 240v 60Hz
RB297DVH	3.0	3.0	0	4.5	4.5		

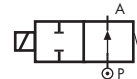
TYPE: B297



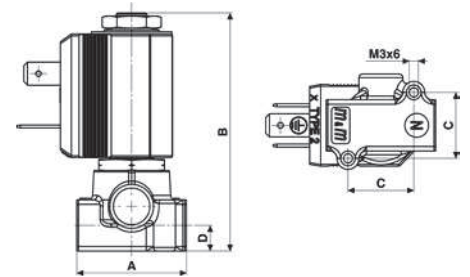
Normally Closed



TYPE: RB297



Normally Open



Flow direction overseat 1 → 2

B297 - FKM seal, NC -

Coil power: AC 10v_A (holding)
AC 16v_A (inrush)
DC 7w

OPTIONS

M Manual override (e.g. code B297DVC^M)

E Electroless nickel plating treatment (e.g. code B297DVE^K)

RB297 - FKM seal, NO -

Coil power: AC 10v_A (holding)
AC 16v_A (inrush)
DC 7w