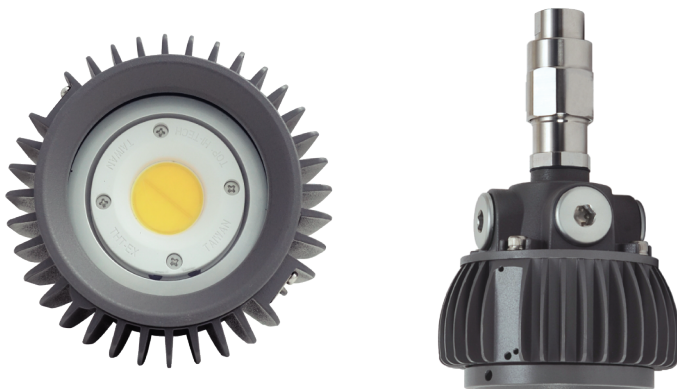


L1203

High Humidity &
Heat Resistant LED Lighting



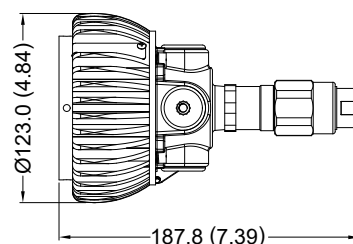
Standards

UL 844
UL 1598
UL 8750
IEC 60079
EN 60079
CNS 3376
CSA C22.2 No.250.0

Net Weight: 1.8 kg (4.0 lb)

Technical Data

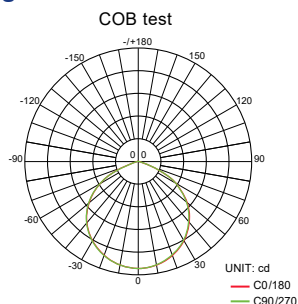
Rated Voltage (±10%)	110V / 120V / 220V / 277V AC	
Watts (±10%)	20W	
Amps	110V: 0.18A, 120V: 0.17A, 220V: 0.09A, 277V: 0.07A	
Color of LED Light	3000K (Warm White) / 5000K (Cool White)	
Ambient Temperature	+66°C ~ +85°C	
Power Factor	cos ≥ 0.9	
CRI	Cool White ≥ 70 / Warm White ≥ 80	
Lumen (±10%)	COB	20W
	3000K	1800lm
	5000K	2000lm
Beam Angle	X-110° / Y-110°	
Frequency	50 / 60 Hz	
Degree of Protection	IP67/ NEMA 6	
Material	●Enclosure	Aluminum alloy
	●Glass	Tempered glass
LED Service Life	60,000 hrs*	
Entrance Thread	5 × G 1/2"	



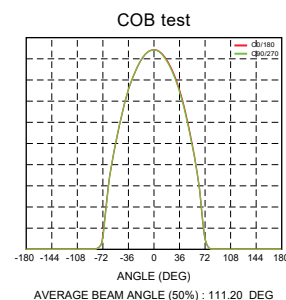
Dimension in Millimeters (inches)

Optical Report

Polar Luminous
Intensity Distribution

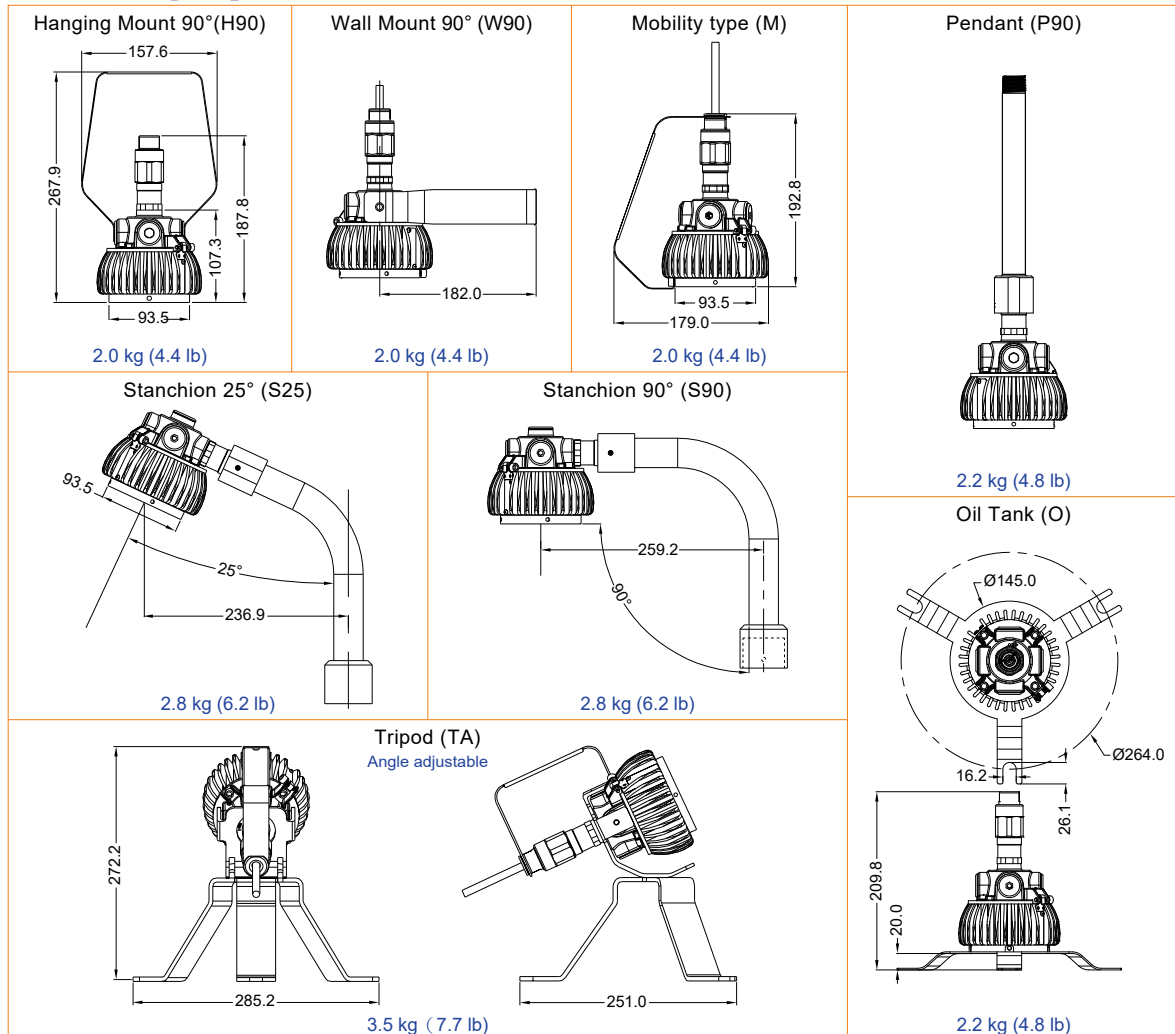


Luminous
Intensity Distribution Diagram



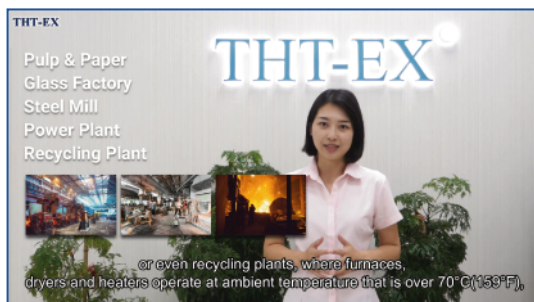
*L70 at 55°C Ambient Temperature *2 years warranty without warranting lumen depreciation.

Mounting Option & Dimensions (All in mm)



Applicable Area

- Pulp & Paper Industry
- Smelter
- Automotive Industry
- Cable Manufacturing
- Power Plants
- Casthouse
- Textile Industry
- Glass Factory



LED Lighting Solutions
for High Temperature Areas