



# Pneumatic Double Acting Automated Ball Valve Package

Series FD9-F6  
ANSI 600#  
Flanged Ball Valve  
Direct Mount

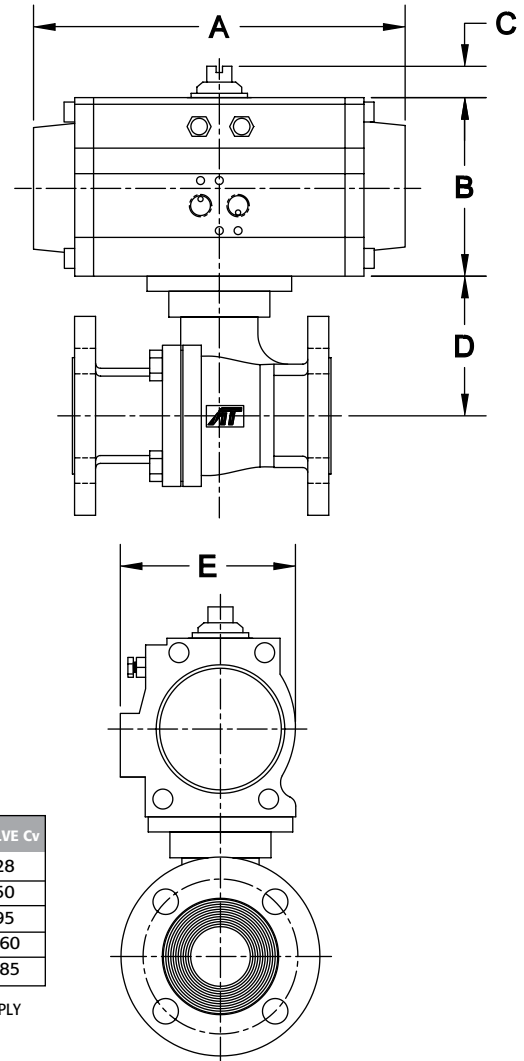


- Firesafe
- Sizes 1/2" – 2"
- Direct Actuator Mount
- 600# ANSI Flange
- Full Port Design
- Available in 316SS or WCB
- 316SS Ball and Stem
- Pyramidal Stem Packing System
- Blowout-proof Stem
- Anti-static Device
- ISO5211 Mounting
- Locking Handle Standard
- Each Valve Traceable\*\*

API 607 - 4th Edition  
CERTIFIED



600# Flanged  
Firesafe Tested to API-607  
Direct Mount



### DIMENSIONS (IN)

VALVE SIZE	A	B	C	D	E	VALVE Cv
1/2"	5.98	2.76	0.79	1.92	2.58	28
3/4"	7.95	3.43	0.79	2.50	3.29	50
1"	7.95	3.43	0.79	2.68	3.29	95
1-1/2"	9.29	4.49	0.79	3.51	4.41	260
2"	10.87	4.88	0.79	4.33	4.82	485

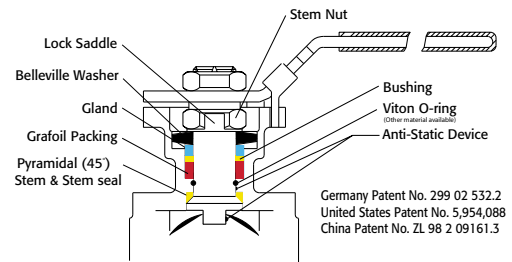
DIMENSIONS SHOWN ARE FOR ASSEMBLIES SIZED FOR 80 PSI SUPPLY

### SIZED FOR 80 psi AIR SUPPLY

SIZE	MODEL
1/2"	FD9-6C-050/TR1D-XX
3/4"	FD9-6C-075/2R2D-XX
1"	FD9-6C-100/2R2D-XX
1-1/2"	FD9-6C-150/2R3D-XX
2"	FD9-6C-200/2R4D-XX

### SIZED FOR 60 psi AIR SUPPLY

SIZE	MODEL
1/2"	FD9-6C-050/2R2D-XX
3/4"	FD9-6C-075/2R2D-XX
1"	FD9-6C-100/2R3D-XX
1-1/2"	FD9-6C-150/2R3D-XX
2"	FD9-6C-200/2R4D-XX



Germany Patent No. 299 02 532.2  
United States Patent No. 5,954,088  
China Patent No. ZL 98 2 09161.3

### SAMPLE PART # FD9-6C-100/2R3D-XX

- Firesafe
- Valve Series
- Class (600#)
- CTFE Seats
- Valve Size (1")
- Triac Actuator
- Rack and Pinion
- Actuator Size
- Double Acting
- Special Designation
- Additional Special Designation



Triac Division  
11363 Deerfield Rd.  
Cincinnati, Ohio 45242  
PHONE (513) 247-5465  
FAX (513) 247-5462  
e-mail: sales@a-tcontrols.com  
www.a-tcontrols.com

### OPTIONS

DESCRIPTION	PART NO. SUFFIX	DESCRIPTION	PART NO. SUFFIX
NEMA 4 Solenoid	(A)	NEMA 4 Limit Switch (2) spdt	(A)
NEMA 7 Solenoid	(B)	NEMA 7 Limit Switch (2) spdt	(B)

Other options available - call for details  
Actuators are sized based on clean/clear fluid.

See valve part number matrix for complete part number and options.

050111-FD9F6DA

SERIES FD9-F6 600# Flanged Direct Mount  
Firesafe