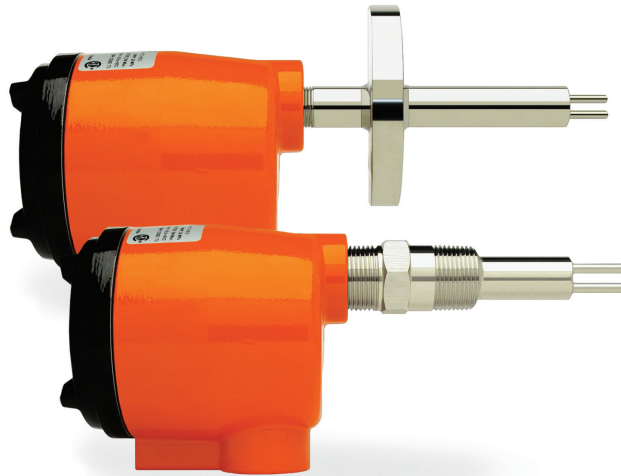


## Product Group Overview



# CLASSIC™ Series

Thermal Flow, Level, Interface &  
Temperature Switches & Transmitters





CRN  
Canadian  
Registration  
Number



**KAYDEN**®  
Helping the World Switch™

**CLASSIC™ 800 Features Overview**

Series	CLASSIC™ 800
Models & Applications	<b>810, 812, 814, 816, 828, 830 &amp; 832</b> Flow, Level, Interface & Temperature
Process Connections	<b>810:</b> 1/2" to 2" MNPT Threaded <b>812:</b> Flanged <b>814:</b> Flanged Retractable Packing Gland <b>816:</b> 1" MNPT Threaded Retractable Packing Gland <b>828:</b> 1" to 3" Sanitary Tri-Clamp <b>830:</b> 3/4" FNPT (InLine) 832: Flanged (InLine)
Insertion 'U' Lengths	1.2", 2", 3", 4", 6", 9", 12" & 18" Standard (most models) Custom lengths available to 240"
Sensor Material	316/316L Stainless Steel, Titanium Gr. 2, Hastelloy C-276 & Monel 400 <b>830 &amp; 832:</b> 316/316L Stainless Steel c/w Nickel Braze <b>828:</b> 304/316/316L Stainless Steel
Remote Electronics Option	Explosion-proof - Standard
Input Power	Universal AC & DC
Power Consumption	Maximum: 6.0 watts (fully configured)
Communications	RS-485
Outputs	Two SPDT sealed relay contacts 4 amps resistive 230 VAC / 24 VDC Modbus via RS-485. 4-20 mA current loop
Temperature Compensation	Yes
Operating Temperature - Sensor	Continuous Use: -45°C to +200°C (-50°F to +392°F) <b>814 &amp; 816:</b> -45°C to +160°C (-50°F to +320°F)
Operating Temperature - Electronics	Continuous Use: -55°C to +65°C (-67°F to +167°F)
Operating Pressure - Sensor	Maximum Design Pressure: 24 MPa (3500 psig) Temperature derated. Visit <a href="http://kayden.com">kayden.com</a> for pressure ratings per model.
Self-Test	Automated diagnostics performed on electronics & sensing elements
Agency Approvals	<div style="display: flex; justify-content: space-around; align-items: center;"> <div style="text-align: center;">  </div> <div style="text-align: center;"> <p><b>CRN</b> Canadian Registration Number</p> </div> <div style="text-align: center;">  </div> </div>