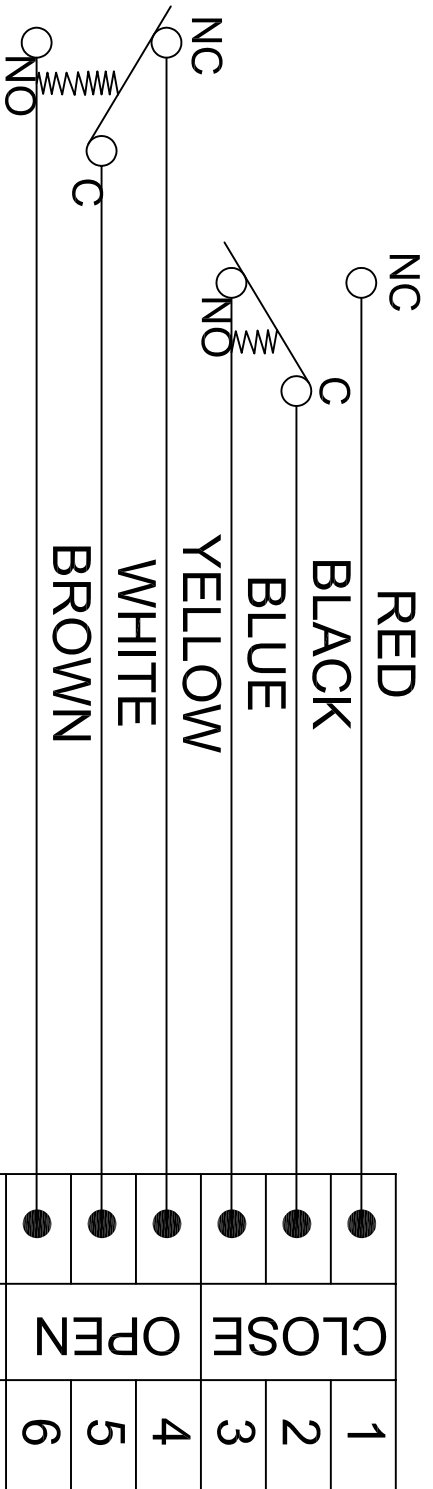
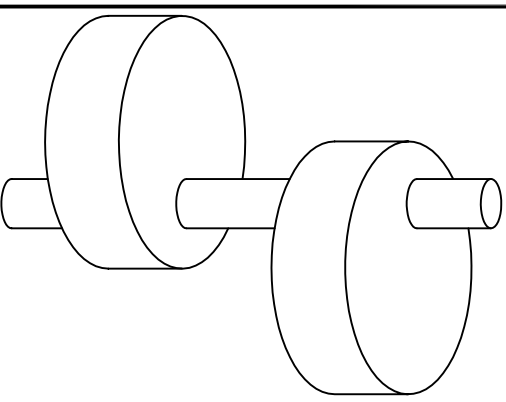
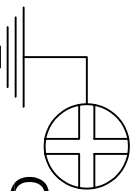


LIMIT SWITCH BOX (2 SPDT) WIRING DIAGRAM

TOP SWITCH



SOLENOID VALVE



GROUND

Omron SS10GL Microswitch,
 Resistive Load; 10.1 amps @ 125/250 VAC,
 10.1 amps @ 8/14 VDC, 4 amps @ 30 VDC,
 0.4 amps @ 125 VDC, 0.2 amps @ 250 VDC,
 Inductive Load, 3 amps @ 125 VAC,
 2 amps @ 250 VAC, 4 amps @ 8/14 VDC,
 0.4 amps @ 125 VDC, 0.2 amps @ 250VDC

BOTTOM SWITCH

THE DESIGN AND DISCUSSURE CONTAINED IN THIS DRAWING WAS ORIGINATED BY AND IS EXCLUSIVE PROPERTY OF A-T CONTROLS, INC. IT IS FURNISHED FOR VENDOR INFORMATION ONLY AND IS NOT AN AUTHORIZATION OR LICENSE TO MAKE THIS CONSTRUCTION OR TO FURNISH THIS INFORMATION TO OTHERS. ALL DRAWINGS MUST BE RETURNED TO A-T CONTROLS, INC. ON DEMAND. THIS DRAWING IS NOT TO BE REPRODUCED OR COPIED IN ANY FORM WITHOUT THE EXPRESS WRITTEN PERMISSION OF A-T CONTROLS, INC.

ECN#	DATE	BY

Division of A-T Controls, Inc.
 11363 Deerfield Road
 Cincinnati, Ohio 45242
 Phone: (513) 247-5465
 Fax: (513) 247-5462

DATE	BY	DATE	BY
02/16/05	SAH		
WIRING DIAGRAM FOR THE APL-210N LIMIT SWITCH			

TOLERANCE UNLESS OTHERWISE SPECIFIED:
 TWO PLACE DECIMAL
 DIM. ±0.02
 THREE PLACE DECIMAL
 DIM. ±0.010
 ANGULAR DIM. ±0°-30°
 DO NOT SCALE DRAWINGS