

# 5205L

# TENSION LOAD CELL

Tension load cell specially designed for load limitation on hoisting devices.

Model 5205L - 10 t - S



### Features

- Sturdy design
- Breaking load > 500%
- CE certified for hoisting devices
- Material: Nickel plated steel (Also available in stainless steel: Model 5200L)
- Protection IP 66
- Easy to install (standard shackles)
- Cable length: 0.5...5t : 3 m  
10...25t : 6 m
- Complete range of "CE" certified electronics and load limiters
- Available options (non exhaustive list):
  - o ATEX intrinsic safety Ex II 1GD Ex ia IIC T6 or T4 Ga Ex ia IIIC T80 C Da
  - o amplified output (V or mA)

### Applications

The SENSY's load cell 5205L is perfectly designed to the following applications :

- SL - HOIST : Hoisting devices and crane's security in combination with a load limitation electronic: (BRIDGEBOY, CRANEBOY, ...)
- SL - LIFT : Load limitation for lifts

### Capacities

5205L : (0.5) - 0.75 - 1.5 - 3 - 5 - 10 - (15) - 25 t

Specifications	SL - HOIST	SL - LIFT	
Linearity error	< ± 1	< ± 1	% F.S.
Creep error over 30 min.	< ± 0.3	< ± 0.2	% F.S.
Zero shift after loading	< ± 0.5	< ± 0.5	% F.S.
Reference temperature	23	23	C
Nominal temperature range	-10...+45	-10...+45	C
Service temperature range	-30...+70	-30...+70	C
Storage temperature range	-50...+85	-50...+85	C
Temperature coefficient of the sensitivity	< ± 0.2	< ± 0.2	% F.S./10 C
Temperature coefficient of zero signal	< ± 0.2	< ± 0.2	% F.S./10 C
Zero balance	± 0.02	± 0.02	mV/V
Input resistance	352 ± 2	352 ± 2	Ohm
Output resistance	352 ± 2	352 ± 2	Ohm
Insulation resistance (50V)	> 5000	> 5000	Megaohm
Reference excitation voltage	10	10	VDC
Nominal range of excitation voltage	3..12	3..12	VDC
Nominal sensitivity	1	0.5	mV/V
Safe load limit	200	300	% F.S.
Breaking load	> 500	> 1000	% F.S.
Static lateral force limit	150	200	% F.S.
Permissible dynamic loading	75	100	% F.S.

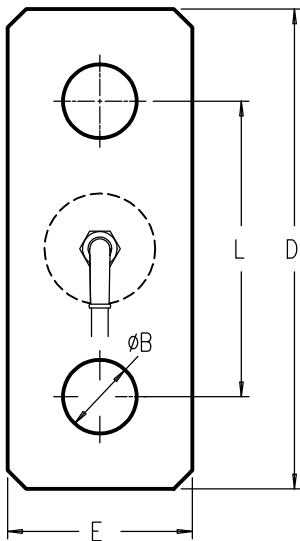
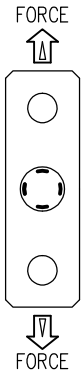
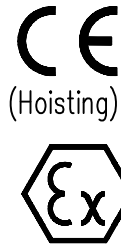
F.S.: full scale - Specifications subject to change without notice

# LOAD CELL

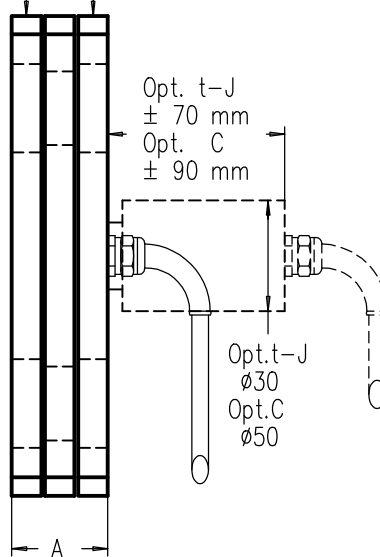
model 5205L alloy steel

## HOISTING TENSION LOADCELL

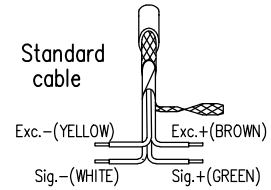
Range 0.5–25t. Breaking limit: >500% -IP 66  
 Cable length : 0.5–5t.> 3 m 10–25t> 6 m



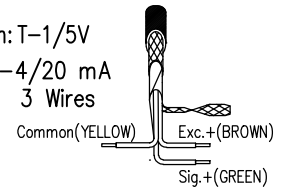
Dual safety plates



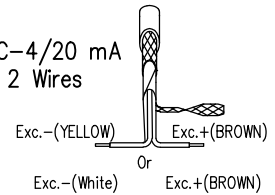
Standard cable



Option: T-1/5V or J-4/20 mA 3 Wires



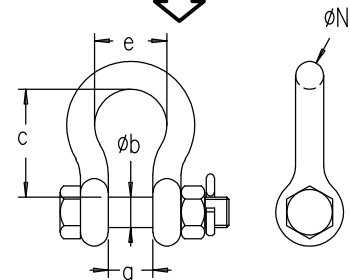
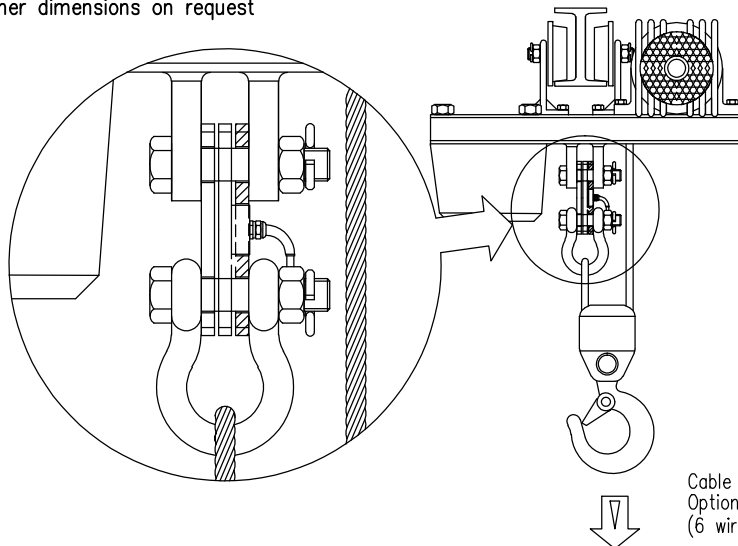
Option C-4/20 mA 2 Wires



NOMINAL CAPACITIES (1mV/V)	USER LIMITS	DIMENSIONS					
		A±1 *	ØB*	L	D	E	Weight
500 kg	325 – 650 kg	13	11.5	65	94	40	0.3 kg
750 kg	500 – 950 kg						
1.5 t	1 – 1.9 t.	20	16.5	65	105	40	0.5 kg
3 t	2 – 3.75 t.	25	19.5	90	135	50	1.1 kg
5 t	3.3 – 6.35 t.	35	26	110	175	60	2.5 kg
10 t	6.6 – 12 t.	47	36	185	275	80	7.2 kg
15 t	10 – 19 t.	47	42	195	300	100	9.9 kg
25 t	20 – 25 t.	55	51	230	340	120	16 kg

OPTION : FORGED SHACKLES					
SWL	a	Øb	c	e	ØN
1 t	16.8	11.2	36.5	26.1	9.65
2 t	20.6	16	47.7	33.3	12.7
3.25t	26.9	19.1	60.5	42.9	17.5
6.5 t	36.6	25.4	84	58	24.6
12 t	51.5	35.1	119	82.5	33.1
17 t	60.5	41.4	146	98.5	41.2
25 t	74	50	178	126	45

Other dimensions on request



SWL : Safe Working Load

Cable screen not connected to transducer  
 Option f : Cable screen connected to transducer (6 wires cable in option)  
 Cable screen connected to transducer for option t,C,J