

## Shutdown valves

### Types 1074/1174

Master shutdown valve Types 1074/1174 are pilot-operated, three port, two position poppet valves with a spring-return action. Type 1074 has screwed connections, whereas Type 1174 is manifold mounted.

Manufactured from materials complying with NACE Standard MR-01-75 (latest revision as applicable), the valve can be used in many oil field and gas field applications. The piston-type pilot section of the valve is equally versatile, responding to a wide range of pilot supply pressures and any one of a variety of pneumatic or hydraulic operating media.

With the valve unoperated, Port 3 is connected to Port 5, while Port 4 is isolated. Pilot pressure, applied above the piston, displaces the valve stem, interconnecting Ports 3 and 4 and isolating Port 5. Low friction fluid seals are used for all dynamic sealing so that the valve can be connected for either normally-open or normally-closed operation.

### Operating parameters

<b>Working pressure</b>	690 bar (10,000 psi) max.
<b>Pilot pressure</b>	103 to 345 bar (1,500 to 5,000 psi).
<b>Flow rate, nominal</b>	27 litres/min (6 imp galls/min).
<b>Operating media – valve</b>	Mineral oils, water, water-glycol mixtures.
<b>Operating media – pilot</b>	Air, sour gas or one of the poppet media (above).
<b>Working temperature</b>	-20°C to + 130°C.
<b>Recommended filtration</b>	10 micron

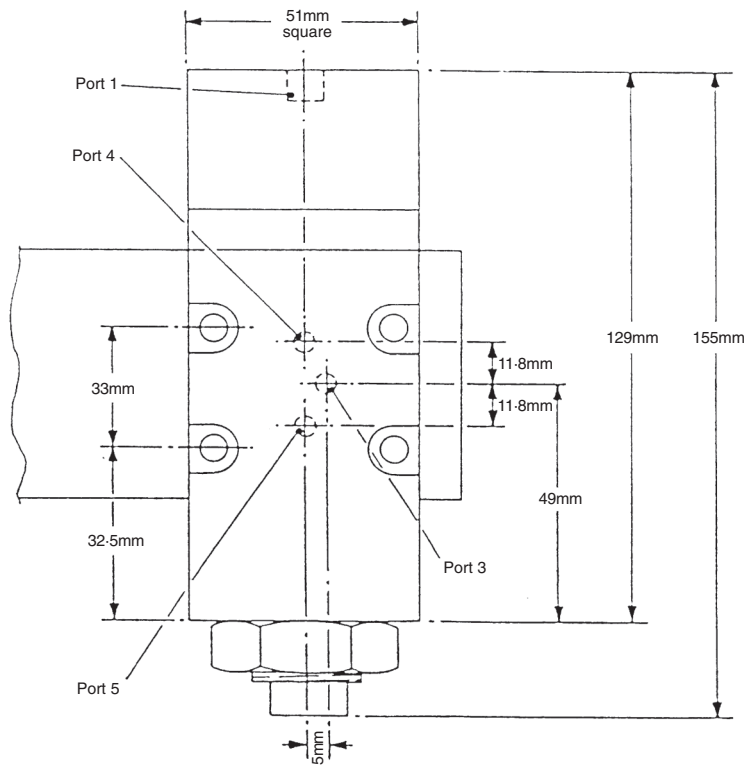


These valves conform to Directive 94/9/EC relating to equipment intended for use in potentially explosive atmospheres and is ATEX (ATmosphere EXplosible) certified.



Marshalsea Hydraulics has been assessed by SGS Société Générale de Surveillance SA and certified as meeting the requirements of ISO 9001:2000 for the design, development, manufacture and servicing of hydraulic pumps, relief valves and intensifiers.

**Drawing giving  
dimensions**



**Weight:** 3kg



Marshalsea Hydraulics Limited  
Marshalsea House  
Venture Way  
Priorswood Industrial Estate  
Taunton  
Somerset TA2 8DE  
United Kingdom

Tel: 01823 331081  
(+44 1823 331081)  
Fax: 01823 323382  
(+44 1823 323382)

E-mail [info@marshalsea.co.uk](mailto:info@marshalsea.co.uk)

[www.marshalsea.co.uk](http://www.marshalsea.co.uk)

**We reserve the right to alter specifications or withdraw products without notice**