

2/2 WAY DIRECT ACTING SOLENOID VALVE, G 1/4"

COMMON FEATURES

Media: water, oil, air

Media temperature: $-10^{\circ}\text{C} \div +130^{\circ}\text{C}$

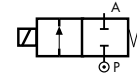
Ambient temperature: $-10^{\circ}\text{C} \div +50^{\circ}\text{C}$

Body material: brass (CW617N EN 12165)

Operator material: stainless steel

Protection class: IP 65 (with connector and gasket)

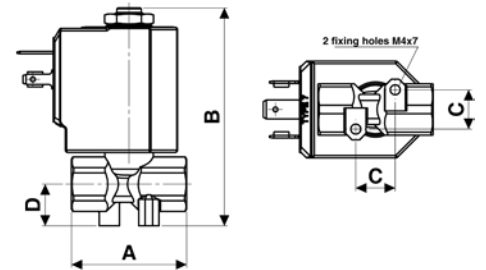
TYPE: D249



Normally Closed



DIMENSIONS & WEIGHTS		D249
G connection	[ISO 228]	1/4"
A	[mm]	38
B	[mm]	72.1
C	[mm]	13
D	[mm]	13.8
weight	[kg]	0.18



Flow direction overseat 1 → 2

VALVE	nominal \varnothing	flow rate Kvs	OPD			COILS	
			min.	max. AC	max. DC	code	[Volts/Hz]
code	[mm]	[l/min]	[barg]	[barg]	[barg]	code	[Volts/Hz]
D249DVD	1.7	1.5	0	25	24	7250	24v DC
D249DVF	2.2	2.4	0	18	16	7200	24v 50/60Hz
D249DVH *	3.0	4.5	0	15	10	7400	110v 50Hz - 120v 60Hz
						7600	200v 50Hz - 220v 60Hz
						7700	230v 50Hz - 240v 60Hz

D249 - FKM seal, NC -

Seal material: FKM

Coil power: AC 18v_A (holding)

AC 36v_A (inrush)

DC 14w

OPTIONS

EPDM seal, temperature max. 120°C (e.g. code D249DEF)

* Minimum batch may be required

