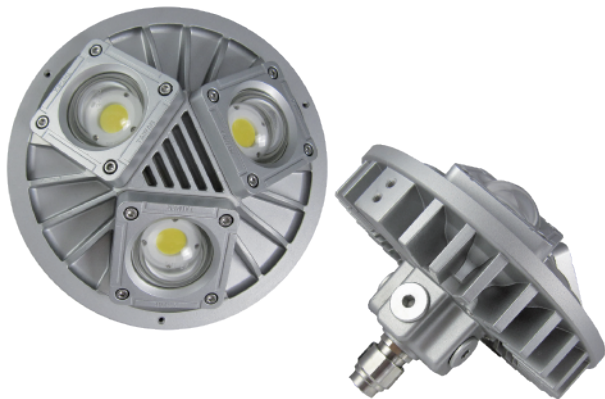




L1303C

Universal Explosion-proof LED Lighting



Net Weight: 10.0 kg (22.0 lb)



Protection

- Ex d IIC T6 Gb
- Ex tb IIIC T85°C Db

Standards

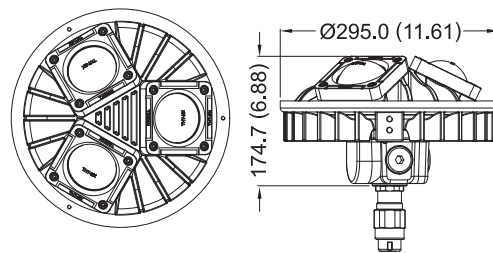
- CNS 3376-0
- CNS 3376-1
- IEC 60079-31

Light Features

- Wide Angle Illumination Design
- Waterproof and Dustproof
- Salt spray 1000 hrs passed

Technical Data

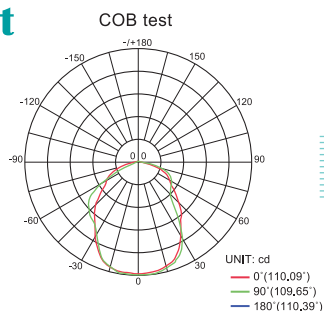
Rated Voltage (±10%)	24V / 110V / 220V AC			
Watts (±10%)	30W / 60W / 90W (Watts of 24V are different, please contact us for details.)			
Amps	30W 110V: 0.27A, 220V: 0.14A / 60W 24V: 2.50A, 110V: 0.55A, 220V: 0.27A / 90W 110V: 0.82A, 220V: 0.41A			
Color of LED Light	3000K (Warm White) / 5000K (Cool White)			
Ambient Temperature	-20°C ~ +40°C, T6			
Power Factor	cos ≥ 0.9			
CRI	Cool White ≥ 70 / Warm White ≥ 80			
Lumen (±10%)	COB	30W	60W	90W
	3000K	2850lm	5700lm	8550lm
	5000K	3000lm	6000lm	9000lm
Beam Angle	X-110° / Y-110°			
Frequency	50 / 60 Hz			
Degree of Protection	IP68 / NEMA 6P			
Material	<ul style="list-style-type: none"> • Enclosure: Aluminum alloy • Glass: Tempered glass 			
LED Service Life	60,000 hrs			
Entrance Thread	4 × NPT 3/4"			



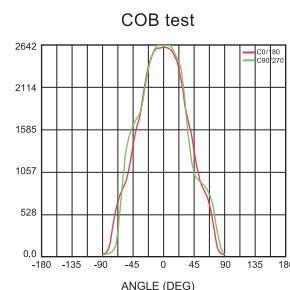
Dimension in Millimeters (inches)

Optical Report

Polar Luminous Intensity Distribution



Luminous Intensity Distribution Diagram



Model Code

THT	E	1303C	A	B	C	1	IO	S90
Brand, THT=TOP HI-TECH CO., LTD.	Category of product, E=Explosion-proof Lighting	Model Name, 1303C=Model L1303C	Type of top cover, A=Tall top cover	Type of LED module, B=COB LED	C.C.T., C=Cool White, W=Warm White	Voltage, 1=110V, 2=220V, 3=24V (60W only)	Wattage, CO=30W, FO=60W, IO=90W	Mounting bracket type W25/90=Wall Mount 25°/90° H25/90=Hanging Mount 25°/90° S25/90=Stanchion 25°/90° P90=Pendant

Mounting Option & Dimensions (All in mm)

<p>Wall Mount 25° (W25)</p> <p>11.4 kg (25.1 lb)</p>	<p>Hanging Mount 25° (H25)</p> <p>11.4 kg (25.1 lb)</p>	<p>Hanging Mount 90° (H90)</p> <p>11.4 kg (25.1 lb)</p>
<p>Wall Mount 90° (W90)</p> <p>11.4 kg (25.1 lb)</p>	<p>Stanchion 90° (S90)</p> <p>11.2 kg (24.6 lb)</p>	<p>Pendant (P90)</p> <p>10.4 kg (22.9 lb)</p>
<p>Stanchion 25° (S25)</p> <p>11.2 kg (24.6 lb)</p>		

Applicable Area

- Oil Refinery Complex
- Petrochemical Complex
- Painting Facility
- Transporting Nature Gas
- Transporting Liquefied Petroleum Gas
- Offshore Platform (Oil and Natural Gas)