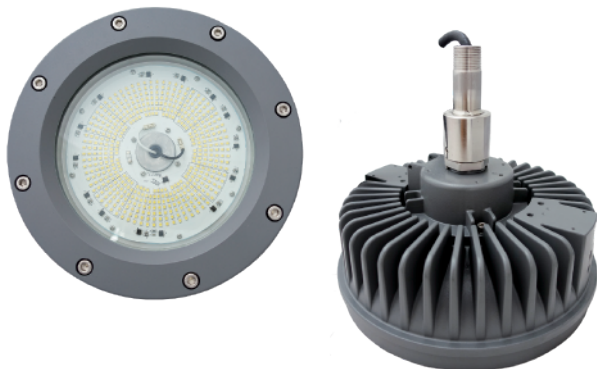


L1217E

Luminaires For Use In Hazardous Locations



Net Weight: 10.7 kg (23.6 lb)

CID1
Group
B, C, D

CIID1
Group
E, F, G

IP67

NEMA
6

Protection

- Class I, Division 1, Groups B, C and D
- Class II, Division 1, Groups E, F and G
- Class III

Standards

UL 844
UL 1598 Luminaires
UL 8750
CSA C22.2 No. 137-M1981
CSA C22.2 No. 30-M1986
CSA C22.2 No. 25-1996
CSA C22.2 No. 250.0
CSA C22.2 No. 250.13

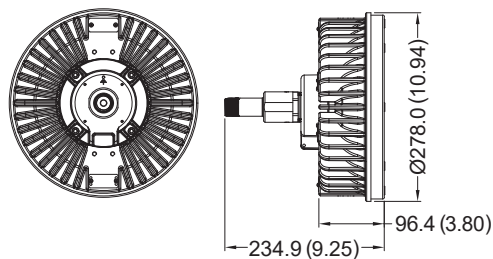
Light Features

- 150W high watt. lighting
- IP 67 rated for wet locations.
- Applicable to high temperature environment

Technical Data

Rated Voltage (±10%)	120V / 277V AC			
Watts (±10%)	120W / 140W / 150W			
Amps	120W 120V: 1.00A, 277V: 0.43A / 140W 120V: 1.17A, 277V: 0.51A 150W 120V: 1.25A, 277V: 0.54A			
Color of LED Light	3000K (Warm White) / 5000K (Cool White)			
Ambient Temperature	CID1: -40°C ~ +40°C, T5 / CIID1: +40°C, T4A			
Power Factor	cos ≥ 0.9			
CRI	Cool White ≥ 70 / Warm White ≥ 80			
Lumen (±10%)	SMD	120W	140W	150W
	3000K	10800lm	12600lm	13500lm
	5000K	12000lm	14000lm	15000lm
Beam Angle	X-110° / Y-110°			
Frequency	50 / 60 Hz			
Degree of Protection	IP67 / NEMA 6			
Material	• Enclosure • Glass	Aluminum alloy Tempered glass		
LED Service Life	60,000 hrs			
Entrance Thread	1 × NPT 3/4"			

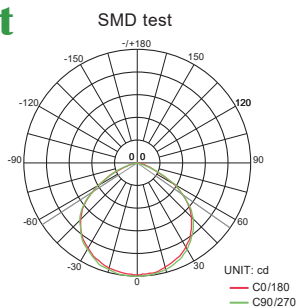
Dimension in Millimeters (inches)



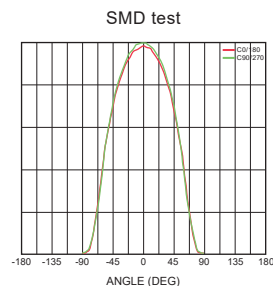
Dimension in Millimeters (inches)

Optical Report

Polar Luminous
Intensity Distribution



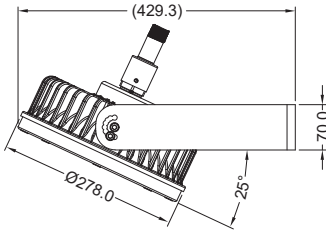
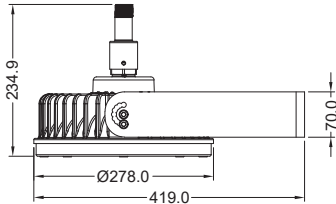
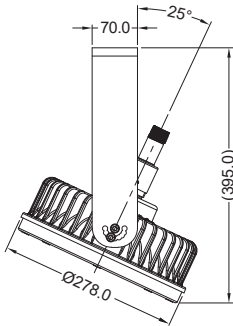
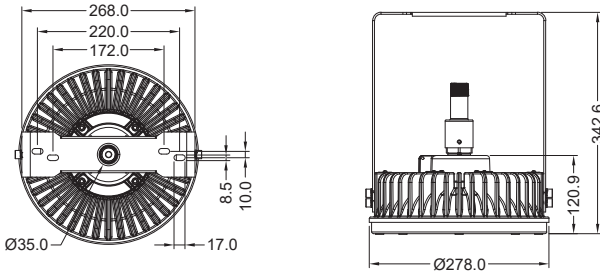
Luminous
Intensity Distribution Diagram



Model Code

THT	E	1217	E	B	K	C	9	P0	WHT
Brand, THT=TOP HI-TECH CO., LTD.	Protection type of luminaire, E=Explosion proof luminaires	Model Name, 1217=Model L1217 series	Sub-series designation, E=Use SMD LED	Type of top cover, B=Short top cover	Type of LED model, K=SMD LED Module	C.C.T., C=Cool White, W=Warm White	Voltage, 6=120V, 9=277V	Wattage, L0=120W, N0=140W, P0=150W	Mounting bracket type WHT(W25/90)=Wall mount 25°/90° WHT(H25/90)=Hanging mount 25°/90°

Mounting Option & Dimensions (All in mm)

<p>Wall Mount 25° [WHT(W25)]</p>  <p>12.4 kg (27.3 lb)</p>	<p>Wall Mount 90° [WHT(W90)]</p>  <p>12.4 kg (27.3 lb)</p>
<p>Hanging Mount 25° [WHT(H25)]</p>  <p>12.4 kg (27.3 lb)</p>	<p>Hanging Mount 90° [WHT(H90)]</p>  <p>12.4 kg (27.3 lb)</p>

Applicable Area

- Oil Refinery Complex
- Petrochemical Complex
- Painting Facility
- Transporting Nature Gas
- Transproting Liquefied
- Petroleum Gas
- Offshore Platform (Oil and Natural Gas)