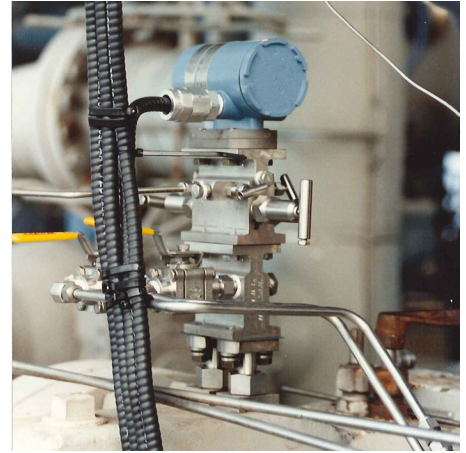


Rod-Out Device

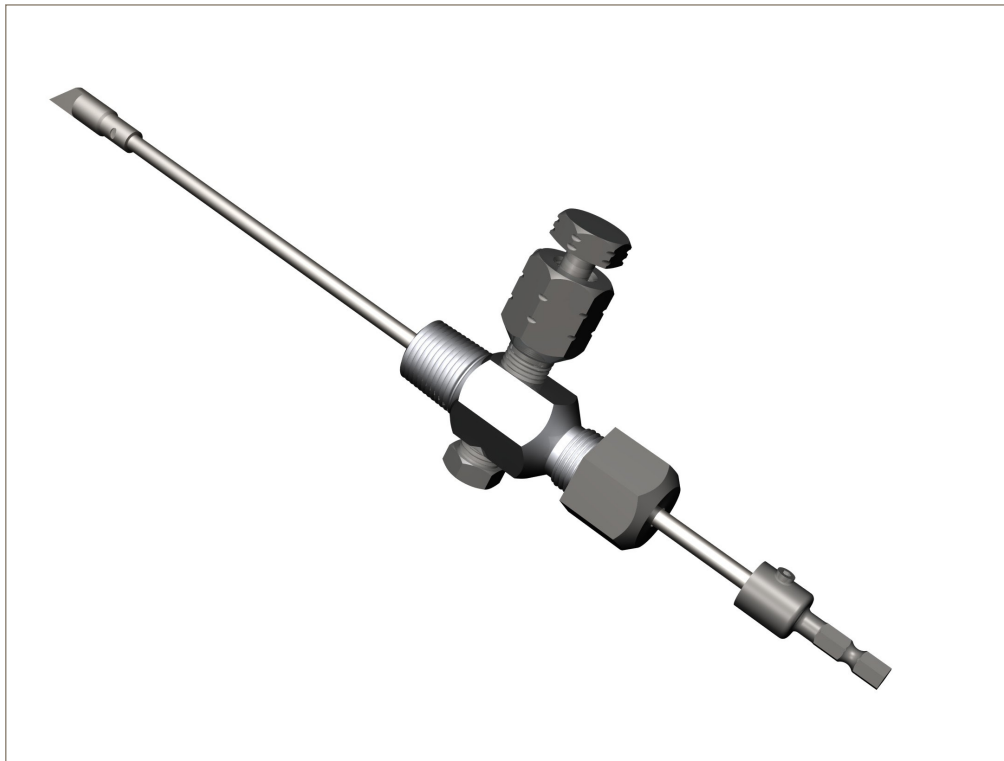
Maintain Clean Process Signal Ports



User Friendly Device to Clean Out Bores of Large Bore Manifolds

Parker's Rod-Out Device cleans clogged bores safely while containing process material and preventing any exposure to employees or the atmosphere.

This Rod-Out Device was designed to be operated with the use of a hand-held drill. The 1/4" Hex Drive connector will accept a standard quick-connect coupling, providing easy connect/disconnect capability. If a quick-coupling is not readily available, the connector will also accept a three-jaw drill chuck.



Contact Information:

Parker Hannifin Corporation
PGI Division
16101 Vallen Drive
Houston, TX 77041 USA

phone 713 466 0056
fax 800 568 9228
pgi_sales@parker.com

www.pgiint.com
www.parker.com

Product Features:

- Power drill operated for maximum clean-out power and ease of operation
- Integrated bleed port and gauge port
- Rod out under pressure
- Offered in both Grafoil® and PTFE
- Larger cutters available
- Longer rod lengths available



ENGINEERING YOUR SUCCESS.

Part Number Construction

AK-132	Body	Packing	-	Options					
	X	X		X	X	X	X	X	X

Body Material Code	
Code	Description
S	316 SS
Other	POA

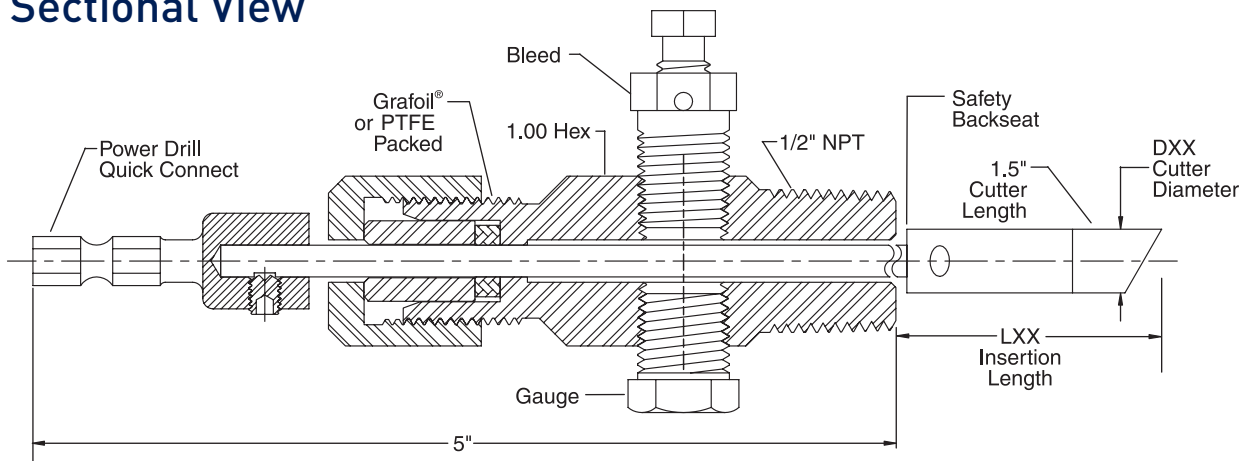
Packing Code	
Code	Description
G	Grafoil®
T	PTFE

Options	
DXX =	Cutter diameter .210 or .320 to .600 in .010 increments (i.e., D42 = .420 diameter)
LXX =	Max insertion length (to cutter tip) From 04 to 30 in 1" increments L21 (21") is standard

Specifications

- **Grafoil®**
1,000 PSI @ 1,000°F max.
- **PTFE**
1,500 PSI @ 450°F max.
- **Cutter and Rod**
17-4 PH-H900 Stainless Steel

Sectional View



Safety Guide – See www.parker.com/safety.

