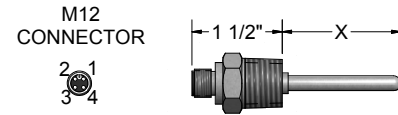
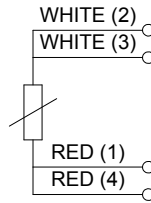
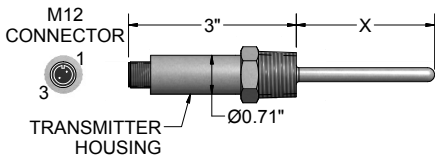
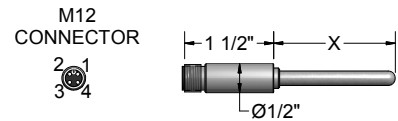
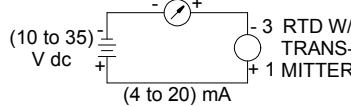
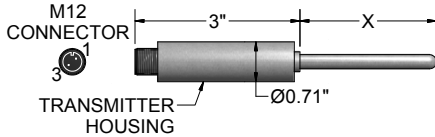


These RTD Assemblies house an optional Series 450 Temperature Transmitter (no connection head is required) that is ideal for monitoring temperature in small areas such as tanks and pipes. The water-tight construction meets the NEMA 6, IP67 Protection Rating requirements. Standard units include a sensor, an M12 process connection housing, and optional transmitter. The transmitter is a 2-wire unit with an analog output. It has measurement input for Pt100 resistance thermometers (RTD) in 4-wire connections. Transmitters can be ranged from (-51 to 160) °C [-60 to 320] °F. With a 10 °C [18 °F] minimum span requirement. **The ambient temperature limits for the M12 connector is (-40 to 85) °C.**



ORDER CODES

Example Order Number: **1** R1T185L **2** 484 - **3** 06 - **4** 00 - **5** C45, T - **6** 450 - **7** U - **8** S(0-200) **9** F

1 Pt100 (α=0.003 85 °C⁻¹) RTD Assemblies

| CODE | TOLERANCE ^[1] |
|---------|--------------------------|
| R1T185L | Grade B |
| R3T185L | Class AA |
| R5T185L | (1/5) Class B |
| RAF185L | Class A |
| RBF185L | Class B |

[1] Refer to RTD tolerance information in the General information section for calculations to determine specific tolerance at temperature. See Instrument Section for total sensor and transmitter output accuracy.

2 316 S.S. Sheath

| CODE | DIAMETER O.D. (inches) |
|------|------------------------|
| 284 | 1/8 |
| 384 | 3/16 |
| 484 | 1/4 |

3 Immersion Length "X"

Specify "X" length in inches using 2 digits, plus any fractional length desired. EXAMPLE: 04 = 4", 04(1/2) = 4.5"

4-1 Sheath Fittings

| CODE | DESCRIPTION |
|------|-------------|
| 00 | No Fitting |

4-2 Re-Adjustable Compression Fittings

| CODE | DESCRIPTION | NPT (inches) | AVAILABLE SHEATH DIAMETERS (inches) |
|------|-------------------------------|--------------|-------------------------------------|
| 12A | Stainless Steel | 1/8 | 1/8, 3/16 |
| 12B | Stainless Steel | 1/4 | 3/16, 1/4, 1/8 |
| 12C | Stainless Steel | 1/2 | 1/8, 3/16, 1/4 |
| 19C | Spring-loaded SS well fitting | 1/2 | 3/16, 1/4 |

FEP gland standard 204 °C [400 °F] max.

4-3 One-Time Adjustable Compression Fittings

| CODE | DESCRIPTION | NPT (inches) | AVAILABLE SHEATH DIAMETERS (inches) |
|------|-----------------|--------------|-------------------------------------|
| 05A | Stainless Steel | 1/8 | 1/8, 3/16, 1/4 |
| 05B | Stainless Steel | 1/4 | 1/8, 3/16, 1/4 |
| 05C | Stainless Steel | 1/2 | 1/8, 3/16, 1/4 |

4-4 316SS Fixed Bushings^[1]

| CODE | MOUNTING THREAD NPT (inches) | AVAILABLE SHEATH DIAMETERS (inches) |
|------|------------------------------|-------------------------------------|
| 8A__ | 1/8 | 1/8, 3/16, 1/4 |
| 8B__ | 1/4 | 1/8, 3/16, 1/4 |
| 8C__ | 1/2 | 1/8, 3/16, 1/4 |
| 8D__ | 3/4 | 1/8, 3/16, 1/4 |

[1] Requires Table 5 - Option 45 Selection

When ordering fixed bushings, specify order code above plus insertion length "U", as measured from hot tip to bottom of threaded bushing. EXAMPLE: code 8A06 is 1/8" NPT, 316 SS bushing located 6" from hot tip.

5 M12 Connector Termination

| CODE | DESCRIPTION |
|------|-----------------------------|
| 45 | No process connection |
| C45 | 1/2" NPT process connection |
| B45 | 1/4" NPT process connection |
| D45 | 3/4" NPT process connection |

OPTIONAL TRANSMITTER

| | |
|---|---|
| T | 4 to 20 mA Temperature Transmitter (Requires Table 6 selection) |
|---|---|

6 Transmitter

| CODE | DESCRIPTION |
|--------|---------------------------------------|
| 450-00 | Programmable transmitter-unconfigured |
| 450 | Programmable transmitter-configured |

7 Fault Signal

| CODE | DESCRIPTION |
|------|-------------------|
| U | Upscale burnout |
| D | Downscale burnout |

8 Range

| CODE | DESCRIPTION |
|------|-----------------------------|
| S | (lower limit - upper limit) |

9 Units

| CODE | DESCRIPTION |
|------|-------------|
| C | Celsius |
| F | Fahrenheit |