



Pneumatic Double Acting Automated Ball Valve Package Series 88 3-Piece Ball Valve

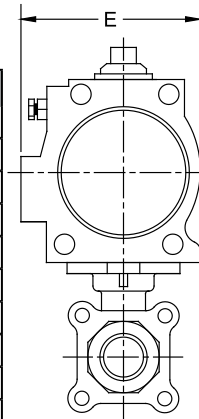
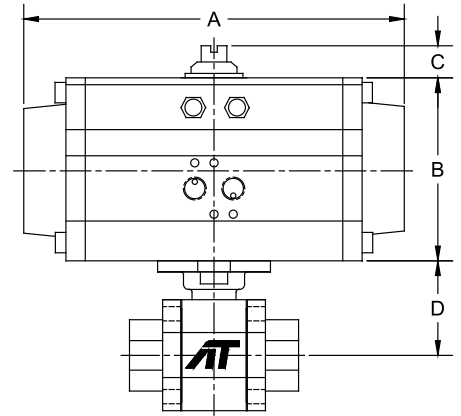
Sizes 1/4" - 4"
Full Port Design
1000/1500/2000 psi WOG
(by size)
316SS, WCB, Alloy 20
or Hastelloy C-276
TH, SW, or BW Ends
Superior Live Loaded Packing
System
Blowout Proof Stem w/ Dual
Anti-Static Devices
RTFE Seats Standard
Pyramidal Stem Seal Design
Monel Ball & Stem Available

STANDARDS

Design	ANSI/ASME B16.34
End Connections	ASME B16.25, B1.20.1, B16.11
Pressure Testing	API 598
Mounting	ISO 5211
Marking System for Valves	MSS SP-25, ISO 5209
Safety Integrity	IEC 61508:2010; SIL 3
Material Certification	EN 10204-3.1 MTR
Quality Assurance	ISO 9001:2008



Direct Mount



DIMENSIONS (IN)

VALVE SIZE	A	B	C	D	E	VALVE Cv
1/4"	5.98	2.76	0.79	1.66	2.58	7
3/8"	5.98	2.76	0.79	1.66	2.58	8
1/2"	5.98	2.76	0.79	1.66	2.58	15
3/4"	7.95	3.43	0.79	1.83	3.29	40
1"	7.95	3.43	0.79	2.31	3.29	70
1-1/4"	7.95	3.43	0.79	2.46	3.29	110
1-1/2"	9.29	4.49	0.79	3.11	4.41	250
2"	9.29	4.49	0.79	3.42	4.41	430
2-1/2"	10.87	4.88	0.79	4.28	4.82	600
3"	11.46	5.28	0.79	4.63	5.20	1,100
4"	13.90	6.18	0.79	5.26	6.04	2,000

DIMENSIONS SHOWN ARE FOR ASSEMBLIES SIZED FOR 80 PSI SUPPLY



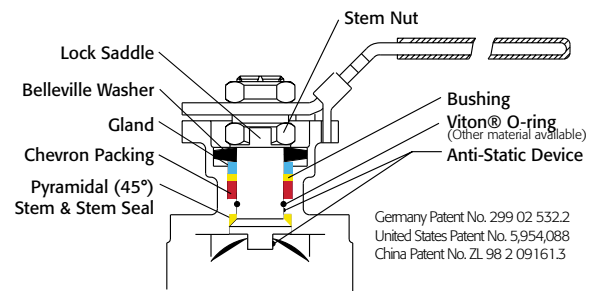
SERIES 88 Direct Mount

SIZED FOR 80 psi AIR SUPPLY

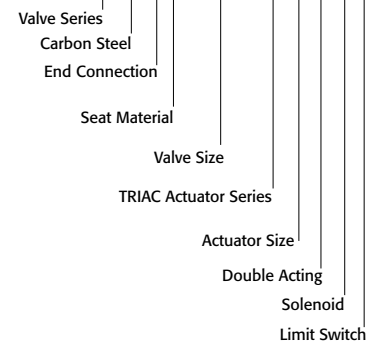
SIZE	MODEL
1/4"	88-TX-025/TR1D-XX
3/8"	88-TX-038/TR1D-XX
1/2"	88-TX-050/TR1D-XX
3/4"	88-TX-075/2R2D-XX
1"	88-TX-100/2R2D-XX
1-1/4"	88-TX-125/2R2D-XX
1-1/2"	88-TX-150/2R3D-XX
2"	88-TX-200/2R3D-XX
2-1/2"	88-TX-250/2R4D-XX
3"	88-TX-300/2R5D-XX
4"	88-TX-400/2R6D-XX

SIZED FOR 60 psi AIR SUPPLY

SIZE	MODEL
1/4"	88-TX-025/TR1D-XX
3/8"	88-TX-038/TR1D-XX
1/2"	88-TX-050/TR1D-XX
3/4"	88-TX-075/2R2D-XX
1"	88-TX-100/2R2D-XX
1-1/4"	88-TX-125/2R2D-XX
1-1/2"	88-TX-150/2R3D-XX
2"	88-TX-200/2R3D-XX
2-1/2"	88-TX-250/2R4D-XX
3"	88-TX-300/2R5D-XX
4"	88-TX-400/2R6D-XX



SAMPLE PART # 88C-TX-050/2R2D-XX



See valve part number matrix for complete part number and options.

OPTIONS

DESCRIPTION	PART NO. SUFFIX	DESCRIPTION	PART NO. SUFFIX
NEMA 4 Solenoid	(A)	NEMA 4 Limit Switch (2) spdt	(A)
NEMA 7 Solenoid	(B)	NEMA 7 Limit Switch (2) spdt	(B)
Intrinsically Safe Solenoid	(C)	Intrinsically Safe Limit Switch	(C)

Other options available - call for details
Actuators are sized based on clean/clear fluid.



9955 International Blvd.
Cincinnati, Ohio 45246
www.atcontrols.com
PHONE (513) 247-5465
FAX (513) 247-5462
sales@atcontrols.com